



# Guam's COVID-19 Extended Trajectory for Purposes of Intervention Efforts and Readiness Benchmarks

***Governor and State Surgeon's Physician Advisory Group  
COVID-19 Unified Response Effort (CURE) Task Force***

Drs. Michael W. Cruz, Felix T. Cabrera, & Luis G. Cruz

# Bottom Line Up Front (BLUF)

## Initial Attack Suppressed, Long War Ahead

- Trajectories presented from early last week focused on total COVID-19 + cases to help predict the immediate threat to Guam's civilian hospital system collapsing.
- Early interventions by GovGuam, the medical community, and our society as a whole, have successfully thwarted said initial threat.
- However, new and more sophisticated models looking primarily at the trend of hospitalized COVID-19 + patients have provided us our first full scale view of what could be Guam's war on COVID-19 over the next several weeks and months.
- Without implementing and enforcing much more strict compliance with the Governor's social distancing and stay home orders, the models clearly show Guam suffering through the greatest casualties since WWII.

## ***Recap of Major Dates***

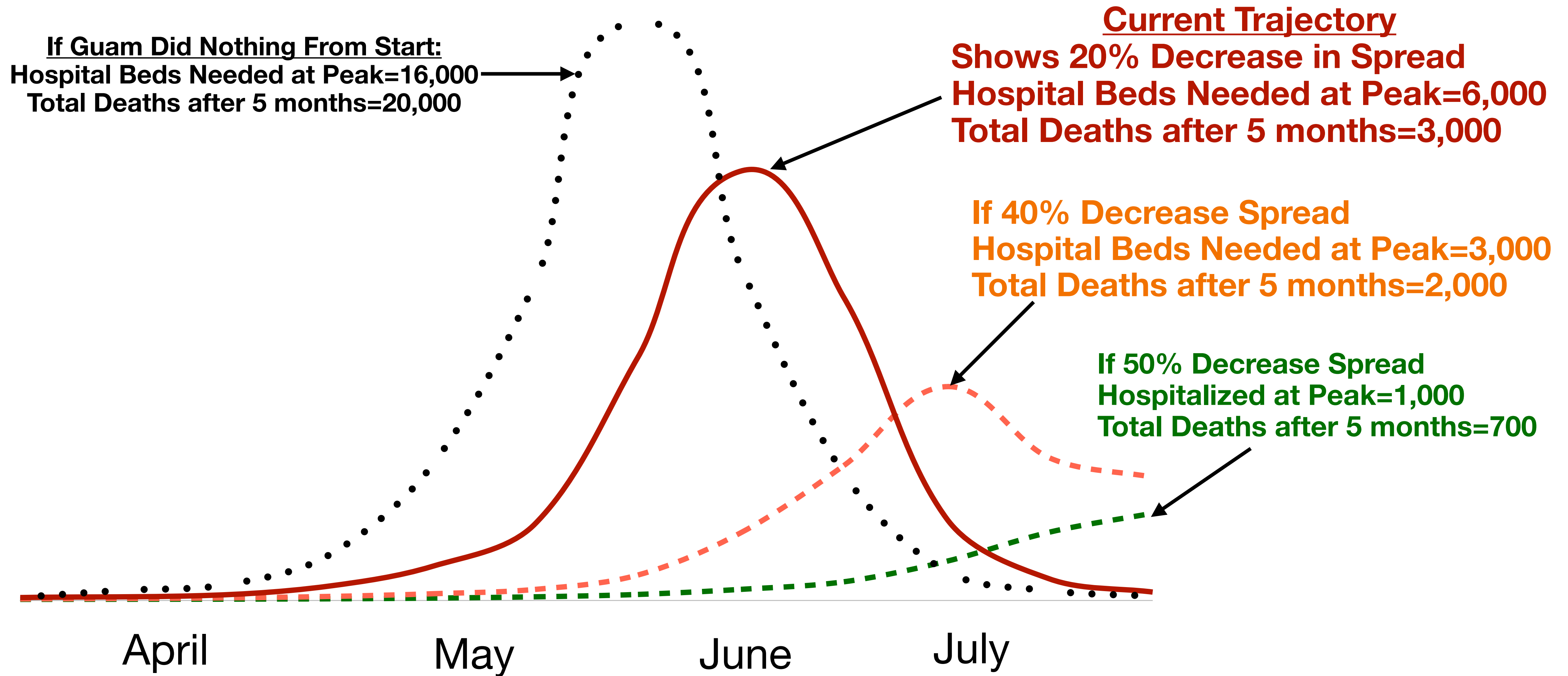
<b>Date</b>	<b>Event</b>
<b>Prior to first known COVID + case on Guam</b>	General public awareness and education regarding COVID threat and precautions
<b>Sun, Mar 15, 2020</b>	Three GMH patients become first positive tests reported on Guam
<b>Mon, Mar 16, 2020</b>	Order of schools & non-essential GovGuam closures
<b>Thu, Mar 19, 2020</b>	First major travel restrictions: 1st quarantined flight
<b>Fri, Mar 20, 2020</b>	EO 2020-05: Non-essential service closures & Stay Home orders v1
<b>Sun, Mar 22, 2020</b>	1st COVID-19 related death
<b>Mon, Mar 23, 2020</b>	First trajectory models published
<b>Tue, Mar 24, 2020</b>	EO 2020-06: Stay Home orders v2 & closure of parks & beaches

# **4 Major Government Acts That Affect COVID-19 Spread**

- 1. School closures:** March 16 (day after 1st known +)
- 2. Major travel restrictions:** March 19 (first quarantine flight)
- 3. Closing of all non-essential services:** March 20 (E.O. 2020-05)
- 4. Stay at Home Orders:** March 20,24 (E.O.2020-05& 06)

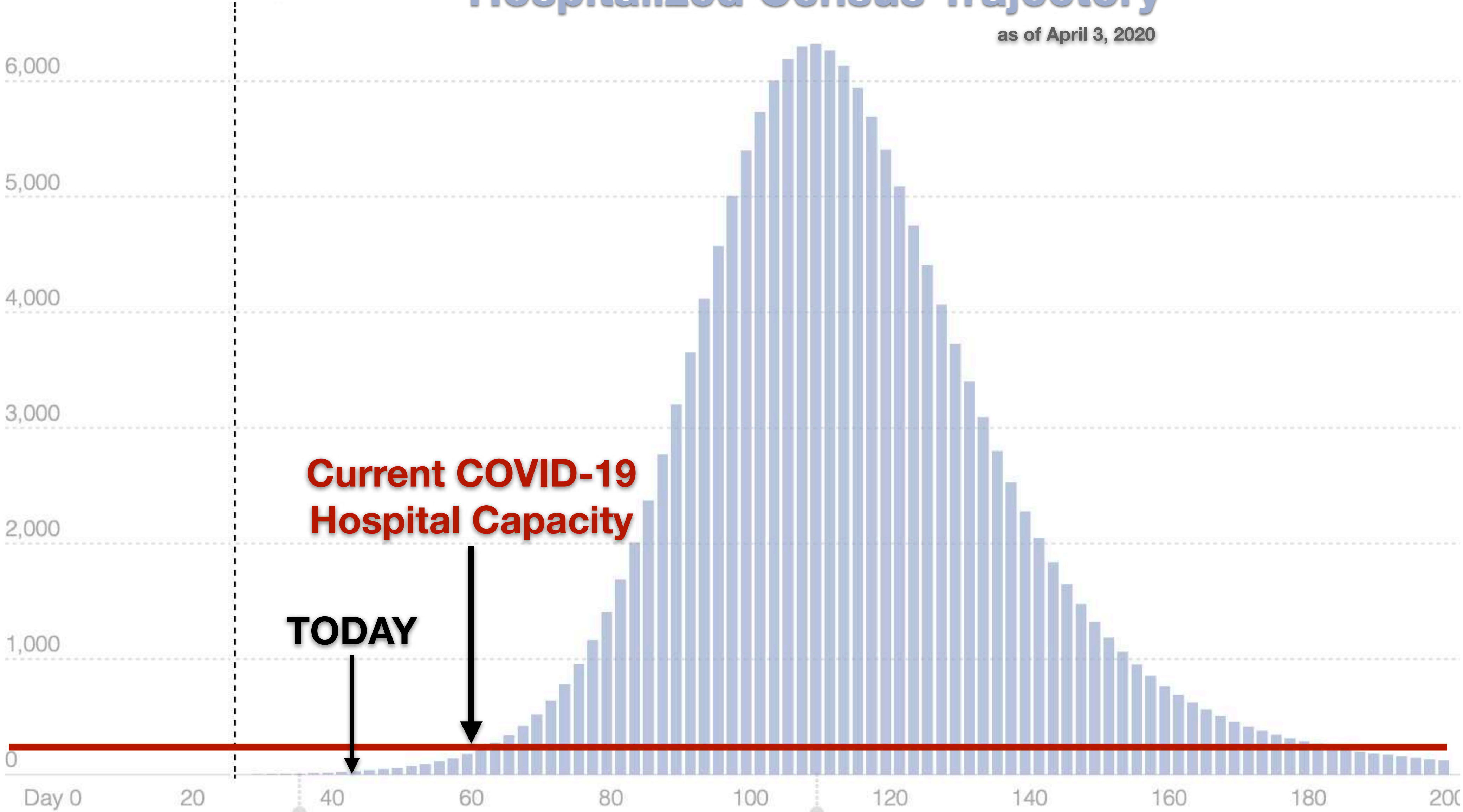
# STAY HOME ● SAVE LIVES

COVID-19 CASES



# Hospitalized Census Trajectory

as of April 3, 2020



**Current COVID-19  
Hospital Capacity**

**TODAY**

First death

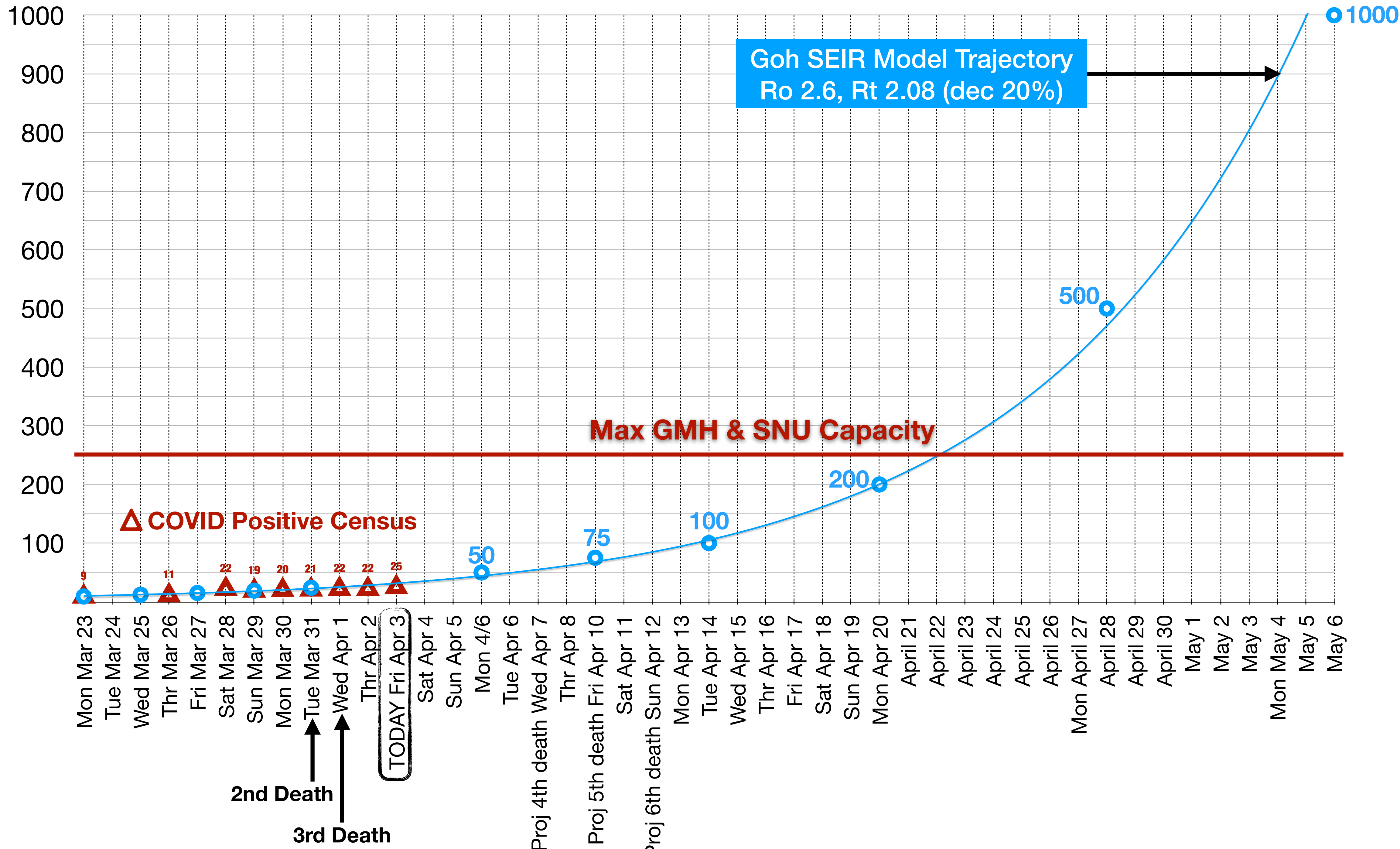
Peak: 6,324

i.e. Hospital Beds Needed

hospitalizations

by June 7, 2020

# Hospitalized COVID Patients



# Federal Medical Station

(Strategic National Stockpile)

50- and 250 - Configurations

- Primary bed in 50-bed FMS
- Adjustable back and footrest
- 1 IV pole
- 400 lb. weight capacity



US Mainland

60 total hours



# GMH Parking Lot: ~25 tents



# University of Guam Fieldhouse

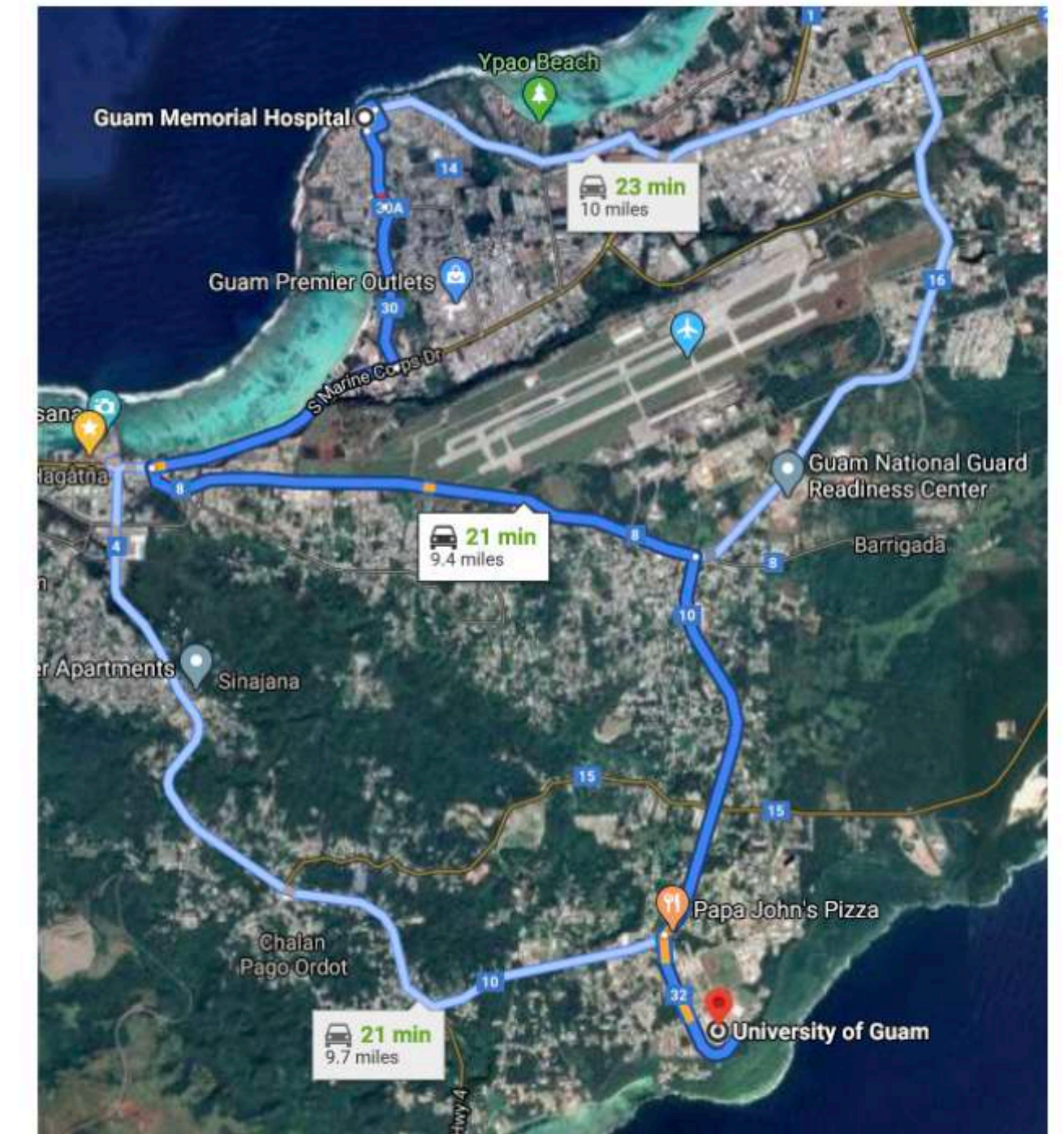
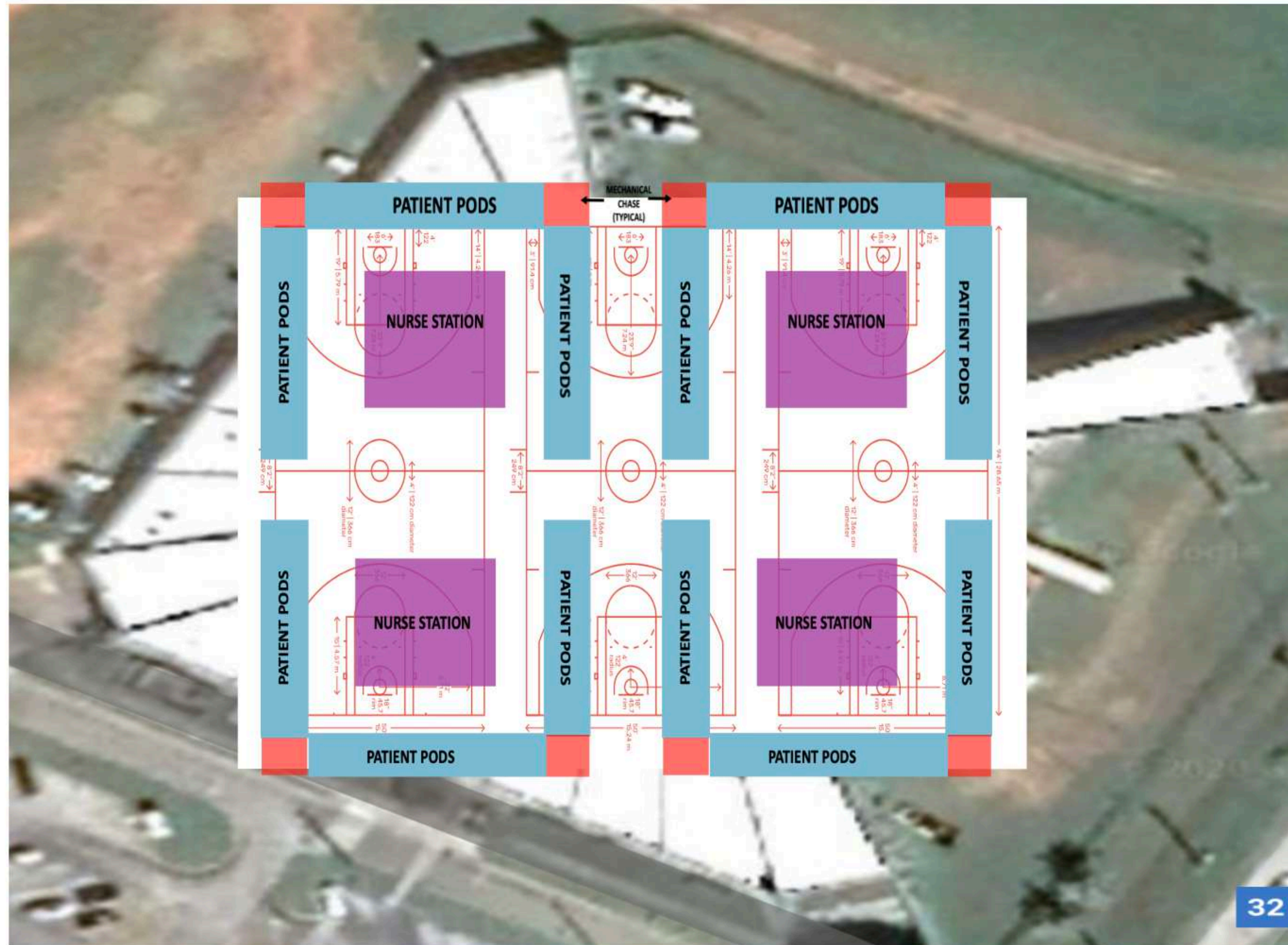
Size: **56,000 sq ft**

Number of Restrooms: 4 locker rooms

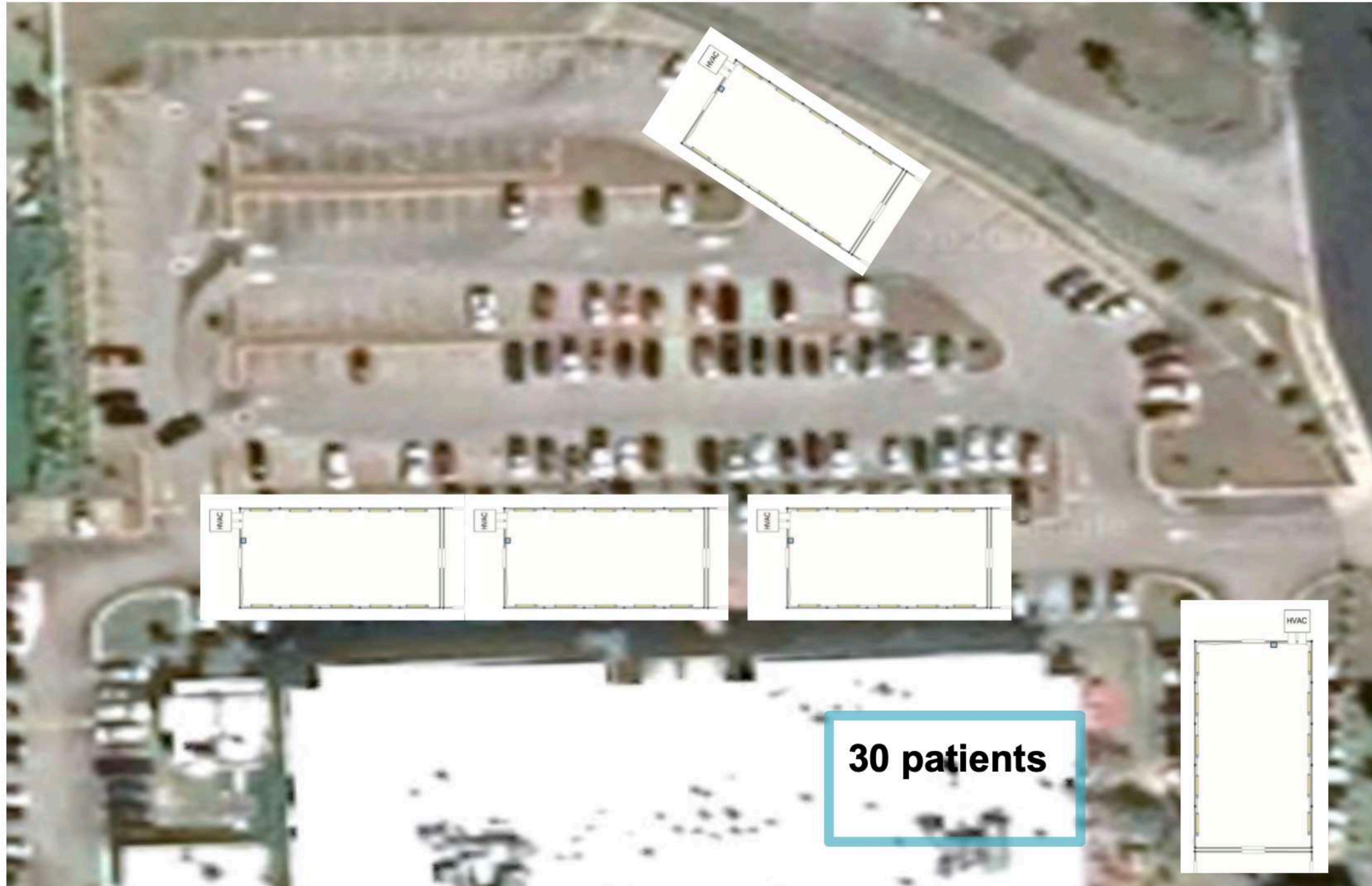
Distance from GMHA: 9.4 miles

Distance from GRMC: 8.9 miles  
(22 min drive)

Backup Generator Capabilities: yes



# Guam Surgicenter + Parking Lot



## Building:

- Surg - 30 pts
- Space - 15 pts

Parking lot: 150 pts

**Total = 200 pts**

## USACE module:

- 15 patients

## BLU-MED:

- 10 patients

# Modular Emergency Facilities



*Australian Defence Force Controlled Environment Shelter Systems*



# Guam Greyhound Park



**Total = 300 patient**

200' x 300'



# H2HC - TYPICAL FLOOR PLAN



Typical Floor

### HOTEL PROVIDED

1. HOTEL WI-FI
2. HOTEL PHONE SYSTEM
3. HOTEL IN-HOUSE NETWORK/TVs
4. HOTEL ICE MACHINE/VENDING
5. HOTEL PACKAGED HVAC

### ENGINEERING CHANGES

1. MODIFIED ELEVATOR CONTROLS

### STANDARD DESIGN

\*COVID  
 Non-COVID  
 Scalable, Tailorable,  
 Site Adaptable

### SPECIAL MEDICAL EQUIPMENT

1. NURSE CALL
2. STORAGE SHELVING
3. WORKSTATIONS
4. MED DISPENSING UNITS
5. # VENTILATORS / FLOOR
6. "CRASH" CART / FLOOR
7. REMINDER GATES
8. EYE/HAND WASH STATIONS

# Medical Barge Concept - 332 Beds

